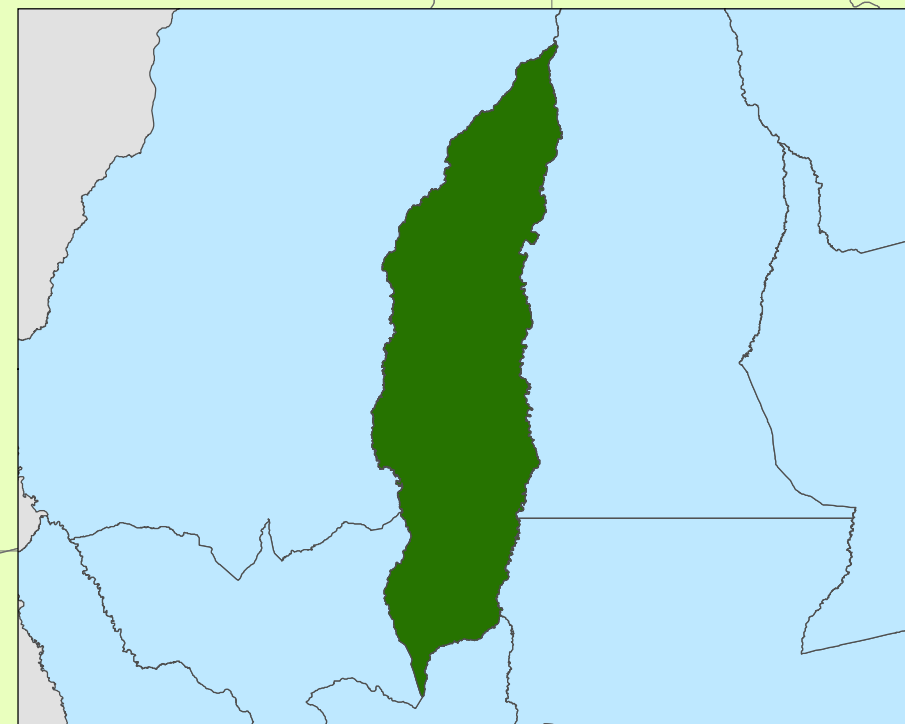
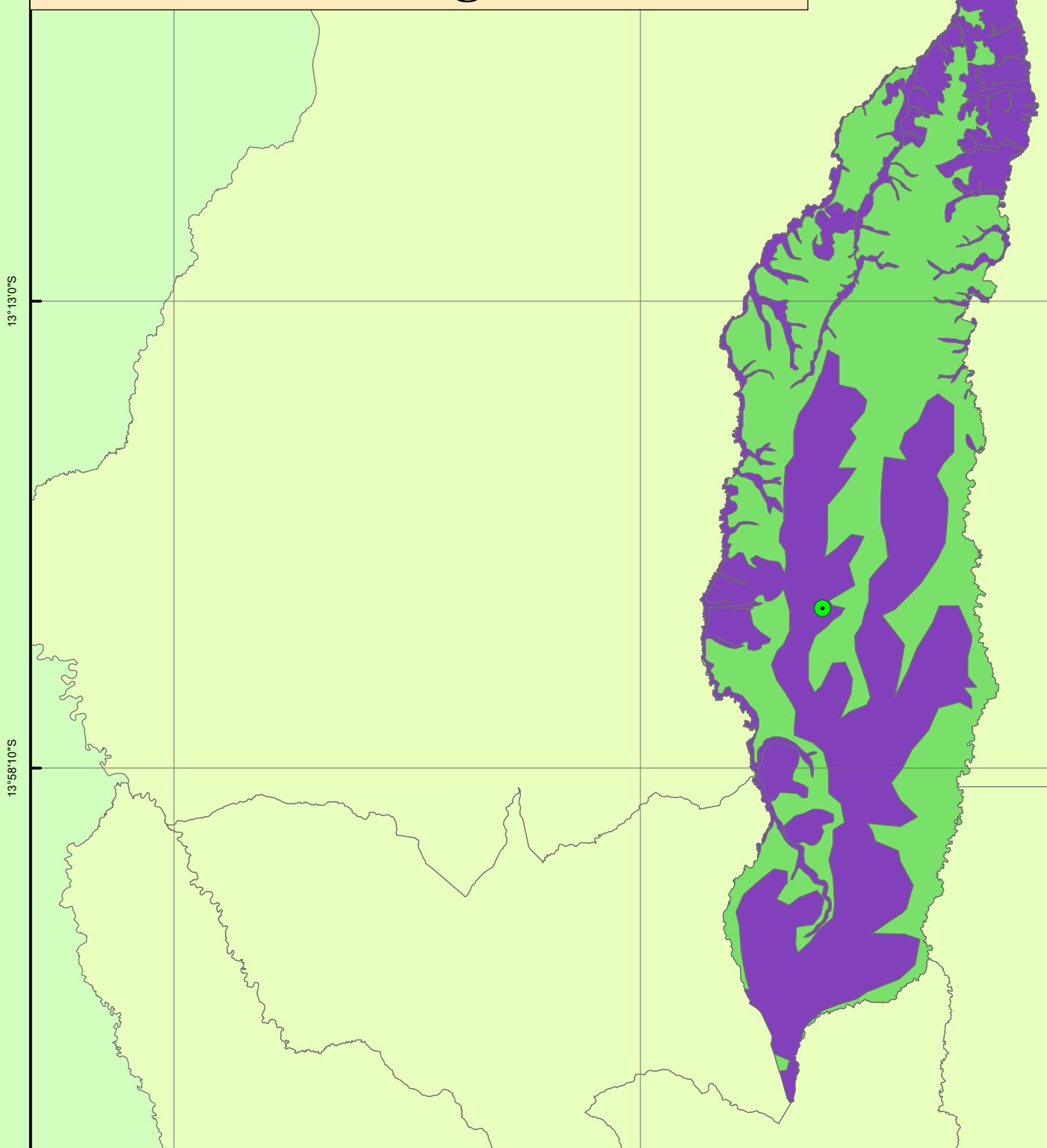


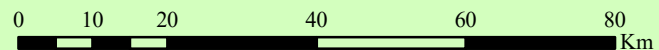
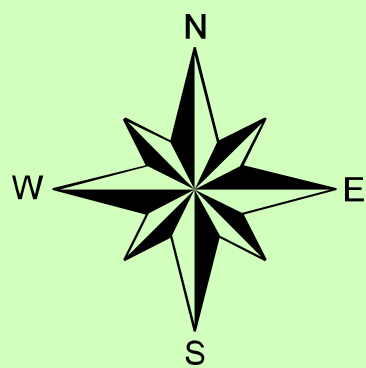
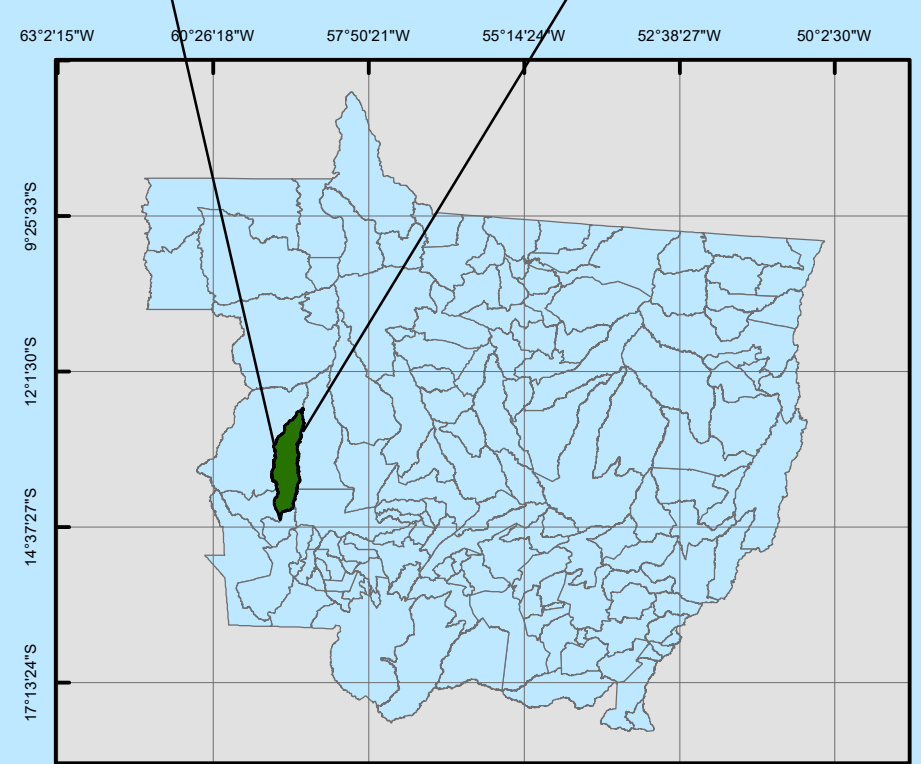
Município de Campos de Júlio

Litologia



LEGENDA

- Prefeitura
- Era Máxima**
- Cenozóico
- Mesozóico



Projeção: Universal Transversa de Mercator - UTM
Datum Horizontal Sirgas 2000
Origem da Kilometragem UTM: Equador e Meridiano 67° W. Gr.
Fonte: MMA

REFEITURA MUNICIPAL DE CAMPOS DE JÚLIO
ESTADO DE MATO GROSSO
www.camposdejulio.mt.gov.br
Vagner Daniel Pinto
Engenheiro Ambiental
Portaria 179/2017 de 28/03/2017