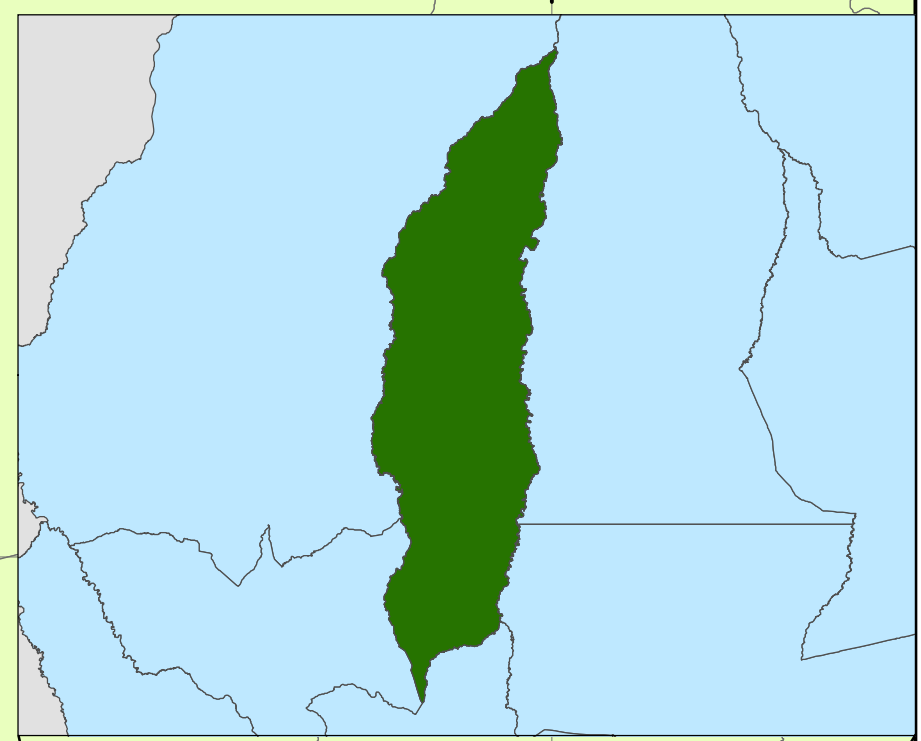
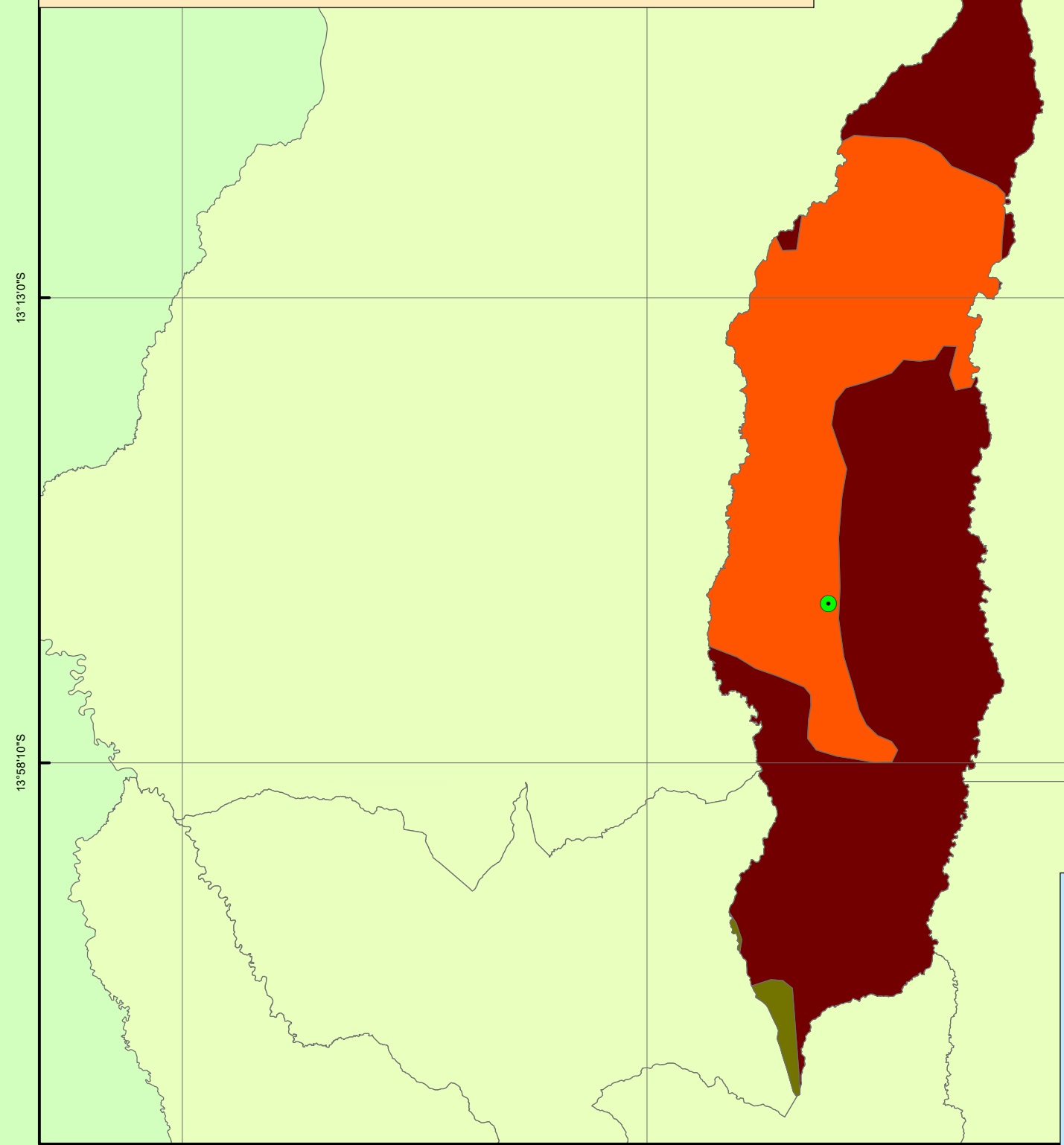



# Município de Campos de Júlio


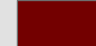

## Biomass



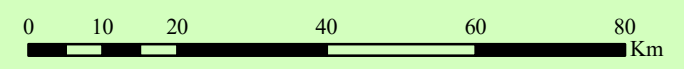
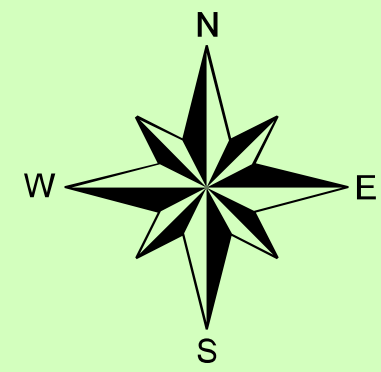
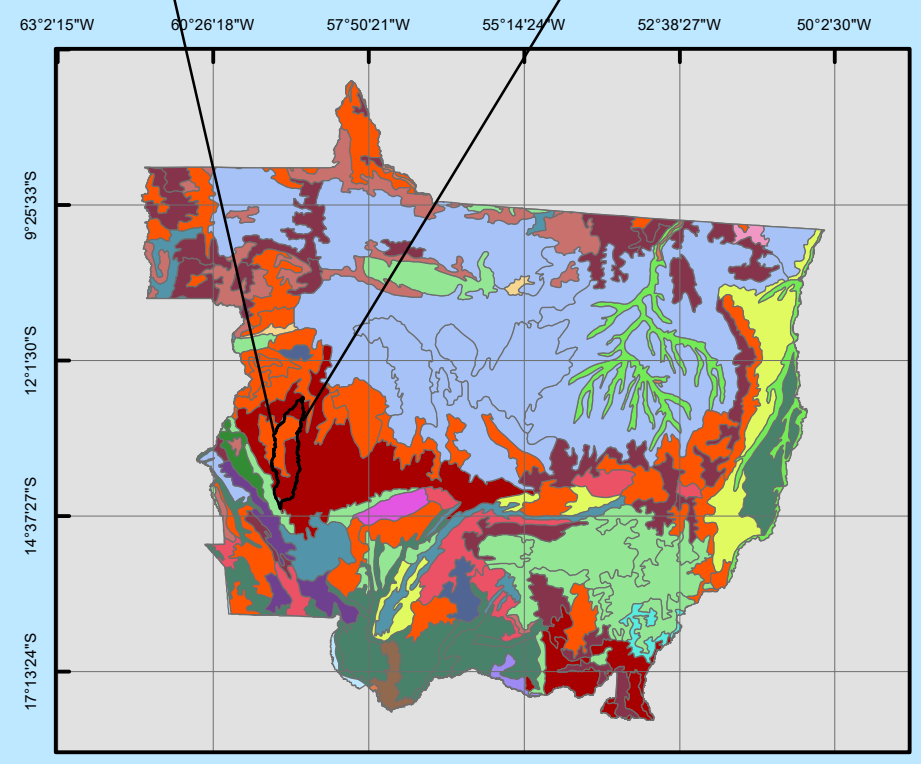
**LEGENDA**

-  Prefeitura

**Classe de Solos**

-  Latossolo Vermelho Amarelo Distrófico
-  Latossolo Vermelho Escuro Distrófico
-  Solo Arenozetoso Profundo

REFEITURA MUNICIPAL DE CAMPOS DE JÚLIO  
ESTADO DE MATO GROSSO  
[www.camposdejulio.mt.gov.br](http://www.camposdejulio.mt.gov.br)  
Vagner Daniel Pinto  
Engenheiro Ambiental  
Portaria 179/2017 de 28/03/2017



Projeção: Universal Transversa de Mercator - UTM  
Datum Horizontal Sirgas 2000  
Origem da Kilometragem UTM: Equador e Meridiano 67° W. Gr.  
Fonte: MMA