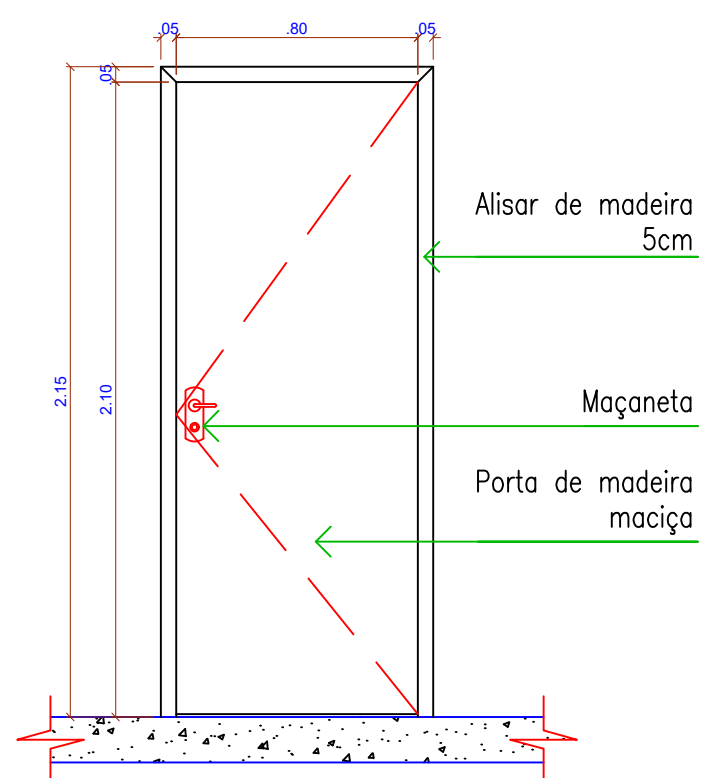
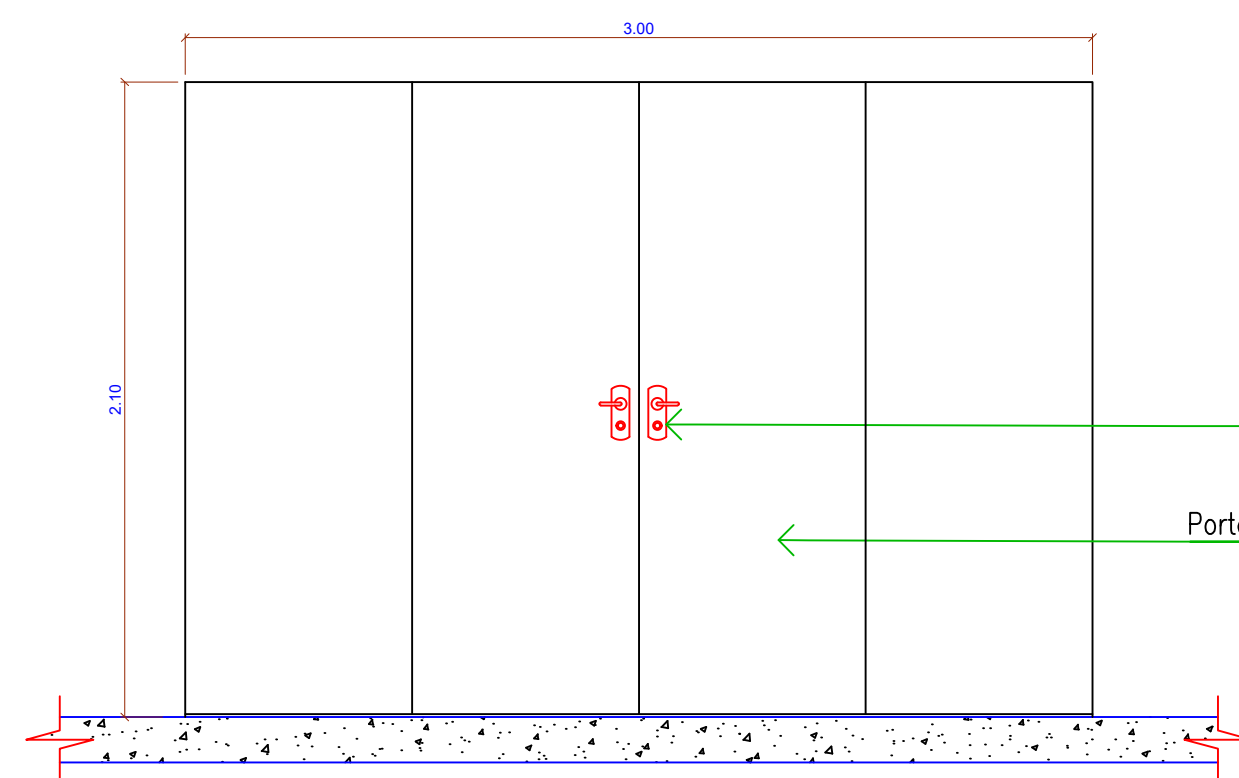


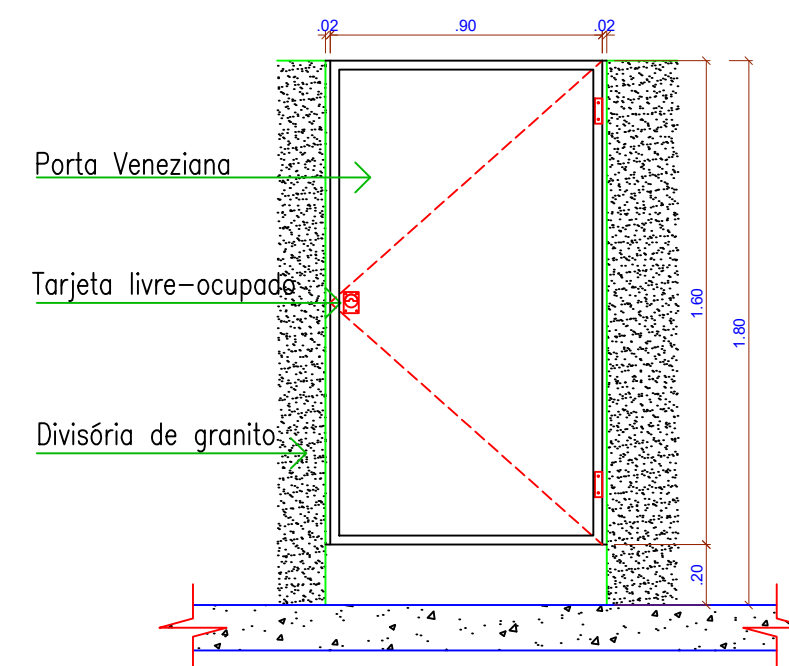
1 ELEVÇÃO - P1
ESC: 1/25



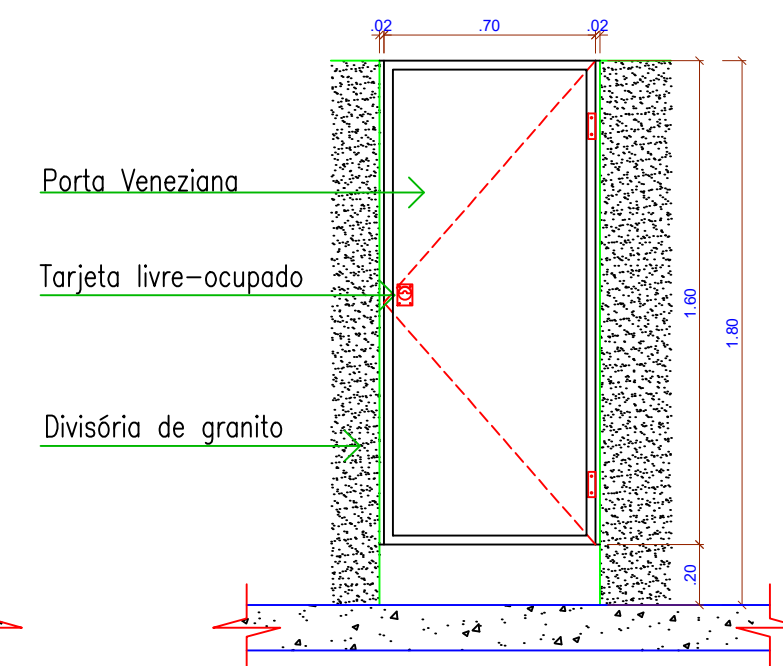
1 ELEVÇÃO - P2
ESC: 1/25



1 ELEVÇÃO - P3
ESC: 1/25



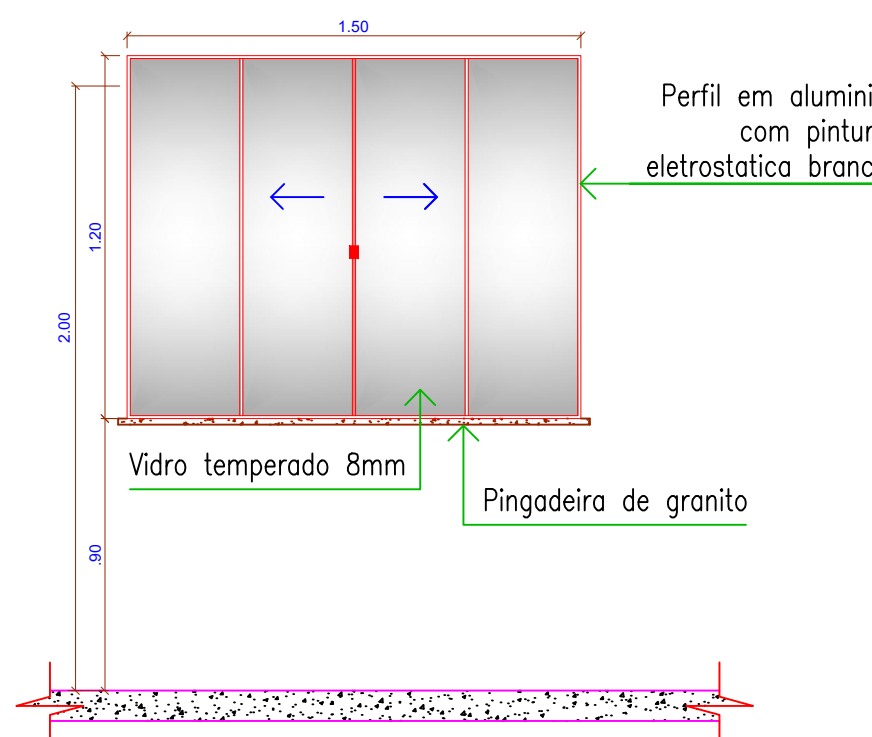
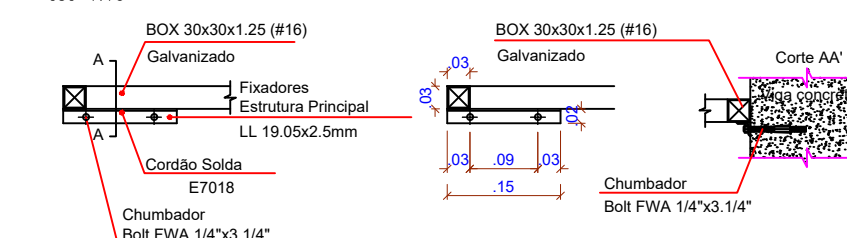
1 ELEVÇÃO - P5
ESC: 1/25



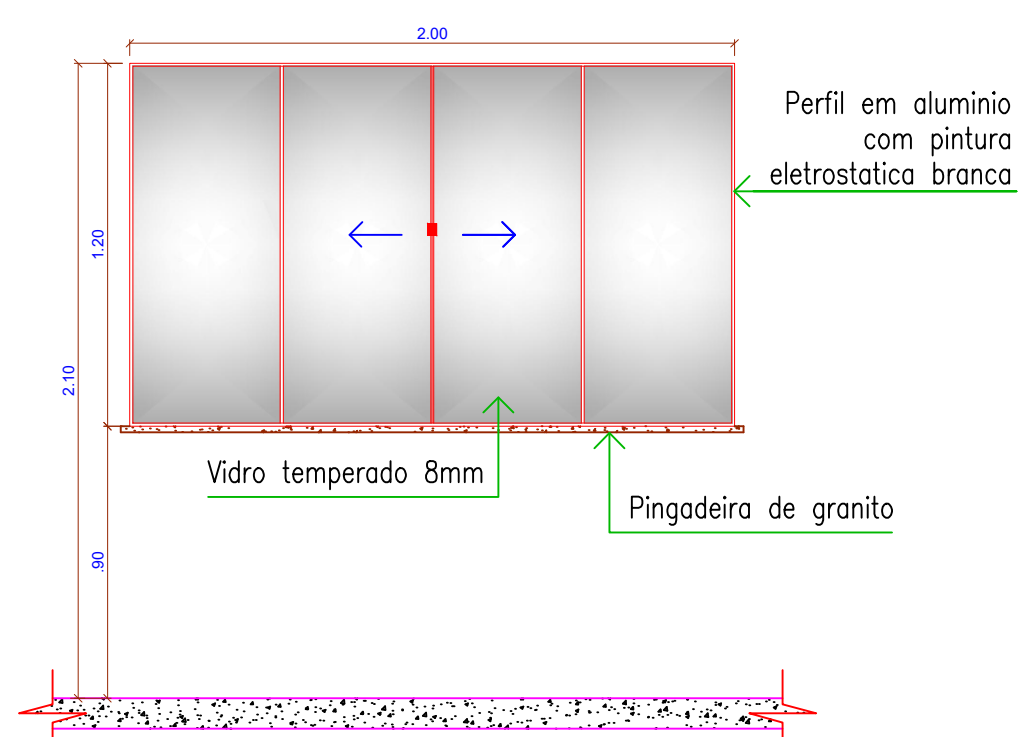
1 ELEVÇÃO - P4
ESC: 1/25

INSERTE 1

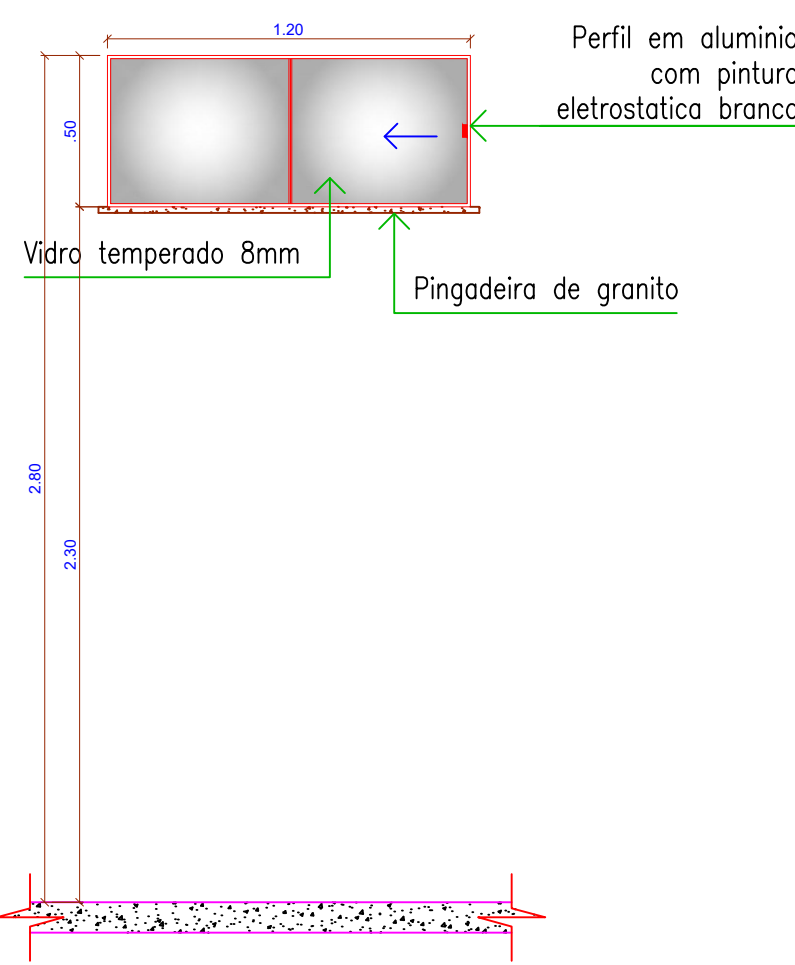
esc 1:10



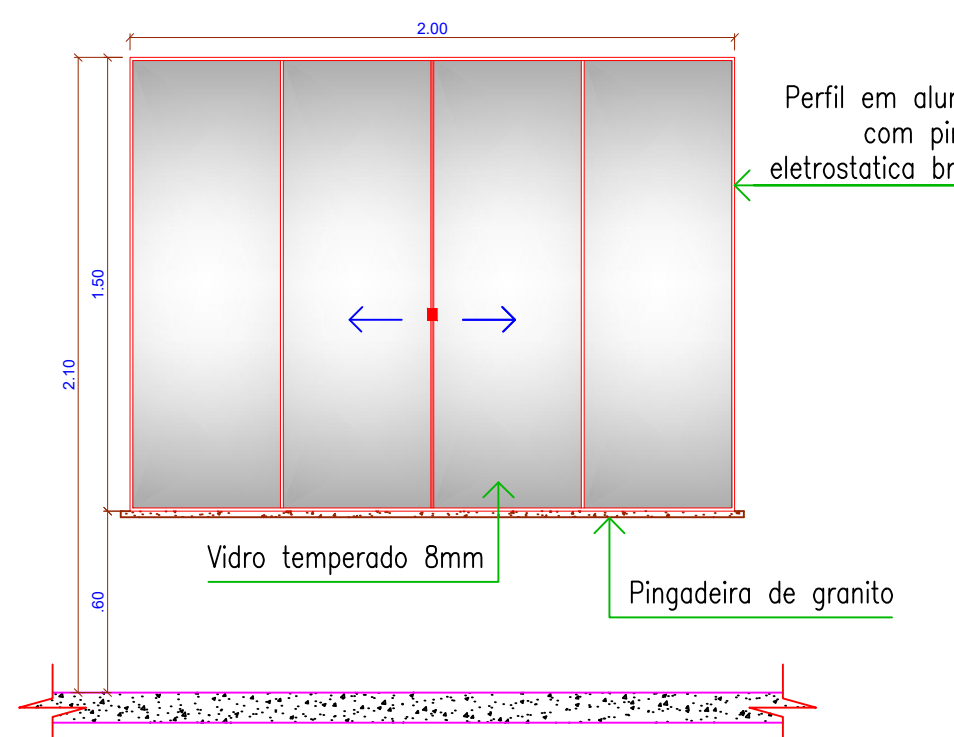
1 ELEVÇÃO - J1
ESC: 1/25



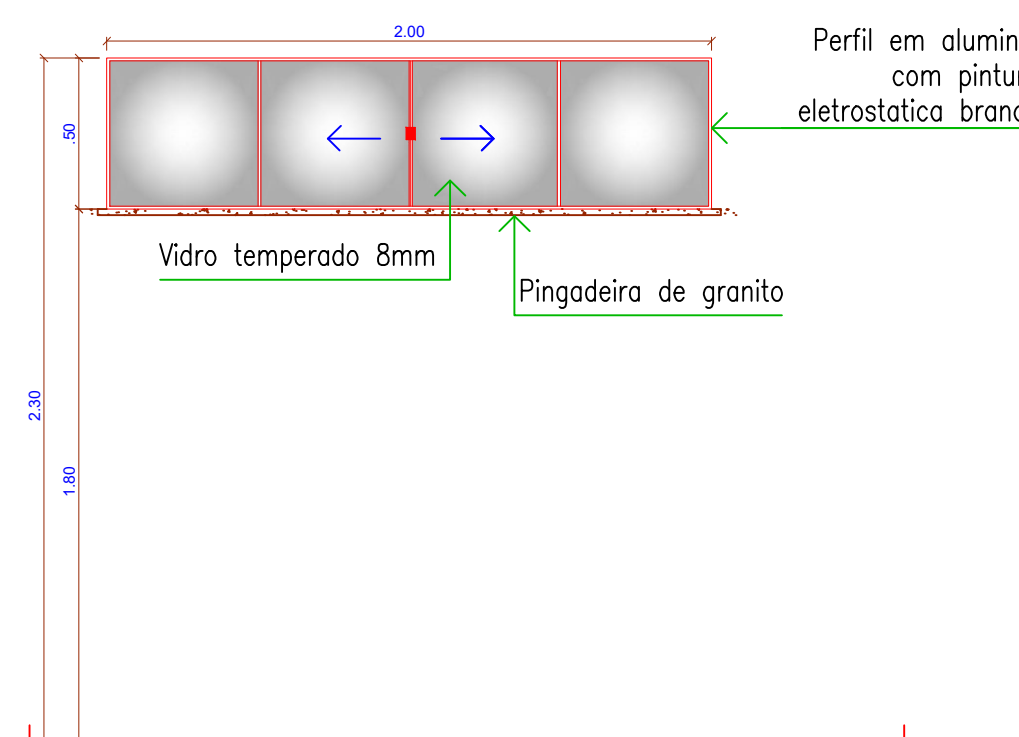
1 ELEVÇÃO - J2
ESC: 1/25



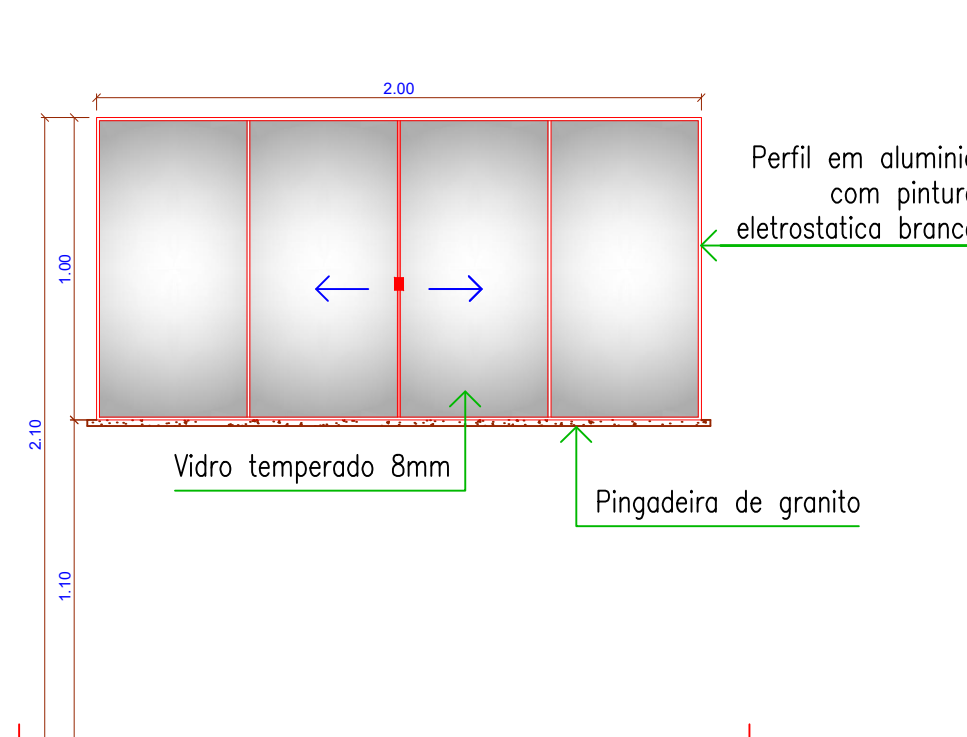
1 ELEVÇÃO - J3
ESC: 1/25



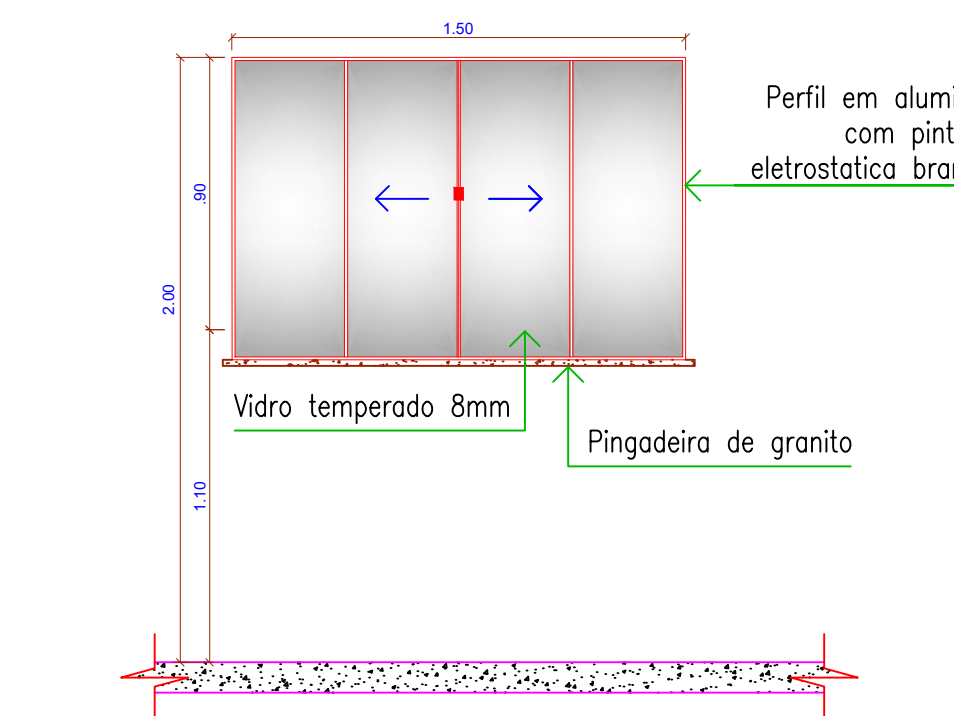
1 ELEVÇÃO - J4
ESC: 1/25



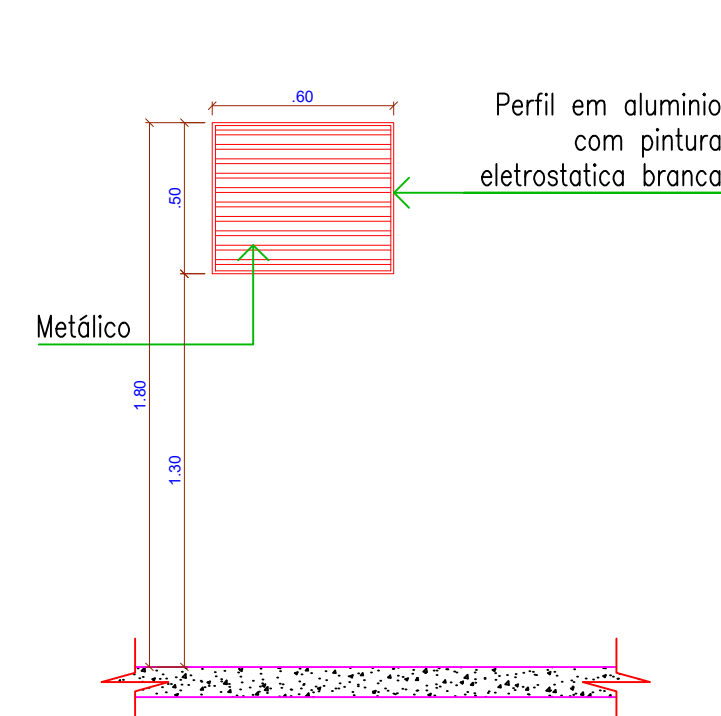
1 ELEVÇÃO - J5
ESC: 1/25



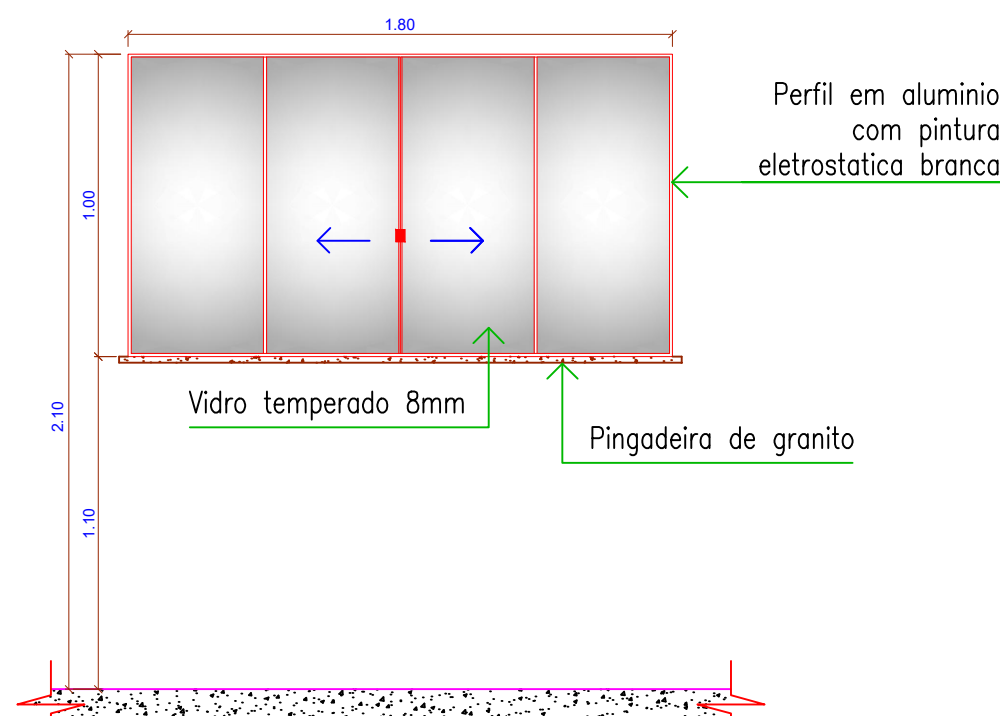
1 ELEVÇÃO - J6
ESC: 1/25



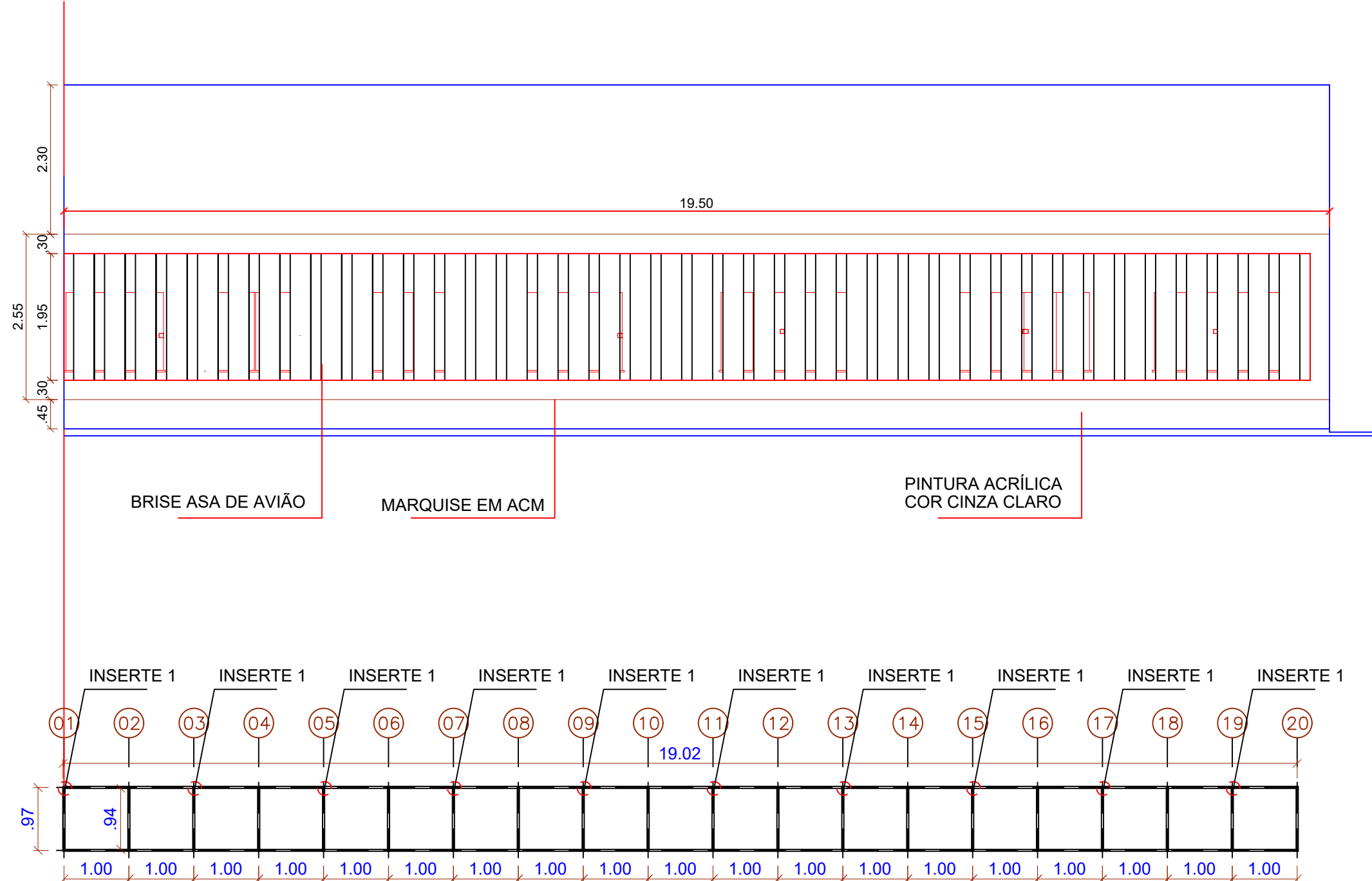
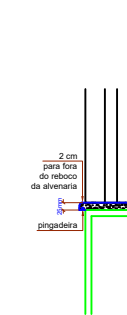
1 ELEVÇÃO - J7
ESC: 1/25



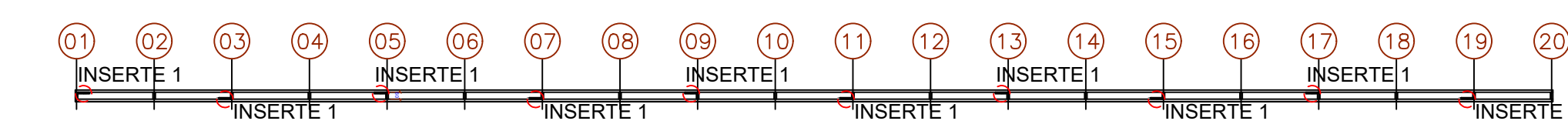
1 ELEVÇÃO - J8
ESC: 1/25



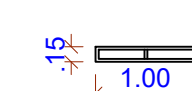
1 ELEVÇÃO - J9
ESC: 1/25



Vista Superior



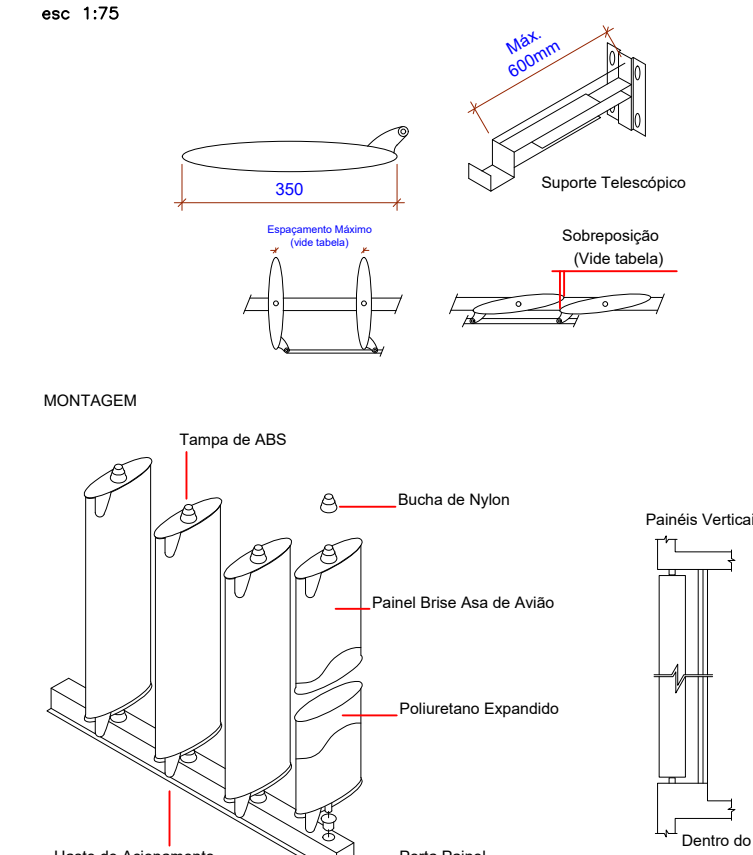
Vista Frontal



Vista Lateral

DETALHAMENTO DO BRISE ASA DE AVIÃO

esc 1:75



Brise Asa de Avião (TIPO)	DISTÂNCIA MÍNIMA D	COMP. MÁX. DO PAINEL VERTICAL	COMP. MÁX. DO PAINEL HORIZONTAL	ESPAÇAMENTO MÁXIMO	SOBREPOSIÇÃO	CONSUMO (MMF)
150	115	3000	2500	135	15	7,4
275	200	3000	2750	260	15	3,8
350	210	3000	3000	335	15	3



Departamento de Engenharia

Avenida Valdir Mazutti, nº 1999, Bom Jardim - Campos de Júlio

Fone:0xx65-3387-2800

Obras:	CONSTRUÇÃO DE CENTRO DE EDUCAÇÃO INFANTIL COM 14 SALAS DE AULA Localizado na Av. Gov. Júlio Campos Quadra 01	Área:	Área à Construir 1.967,40 m²
Prefeitura Municipal de Campos de Júlio		Responsável Técnico	Cintya Vieira Souto CAD: A 160810-0
Conteúdo:	ARQUITETÔNICO -Esquadrias/Brises	DECLARO QUE A APROVAÇÃO DO PROJETO NÃO IMPLICA NO RECONHECIMENTO POR PARTE DA PREFEITURA DO DIREITO DE PROPRIEDADE DO TERRENO.	
Data:	MAIO/2022	Escala:	INDICADAS
Desenho:	CINTYA VIEIRA SOUTO	Folha:	

PLANTA BAIXA PAGINAÇÃO
Esc: 1/100