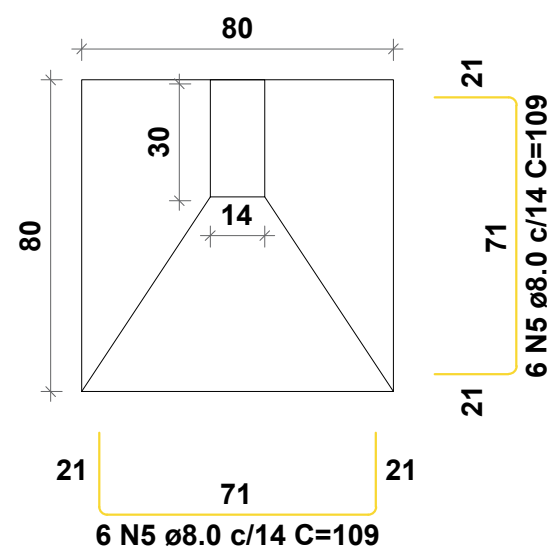
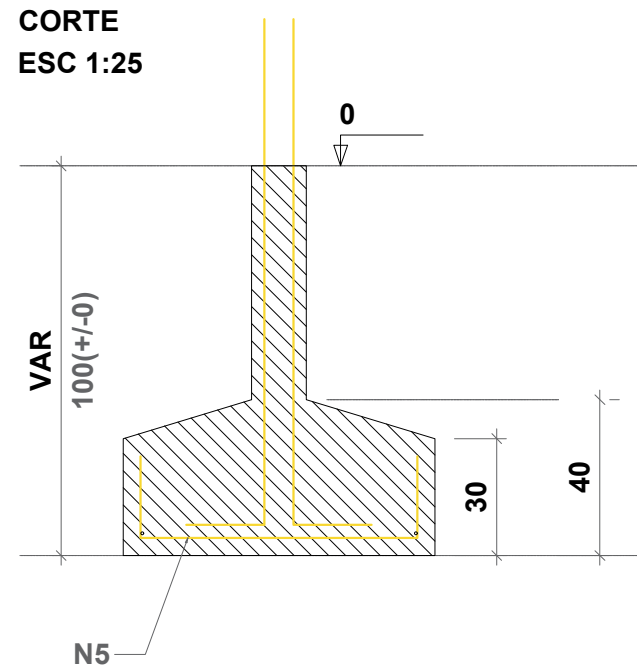


Planta de localização
escala 1:50

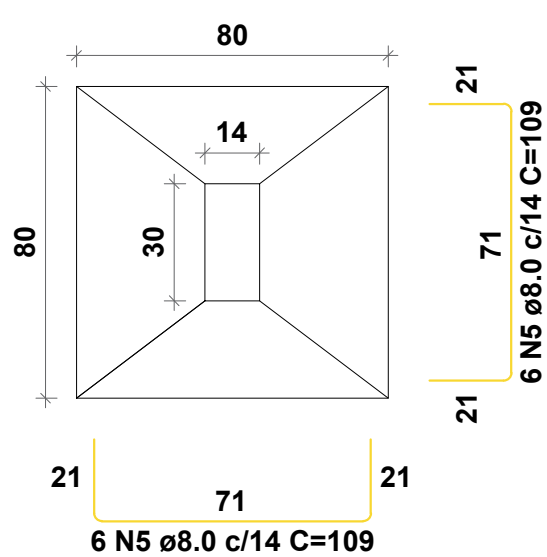
S1 - S2
PLANTA
ESC 1:25



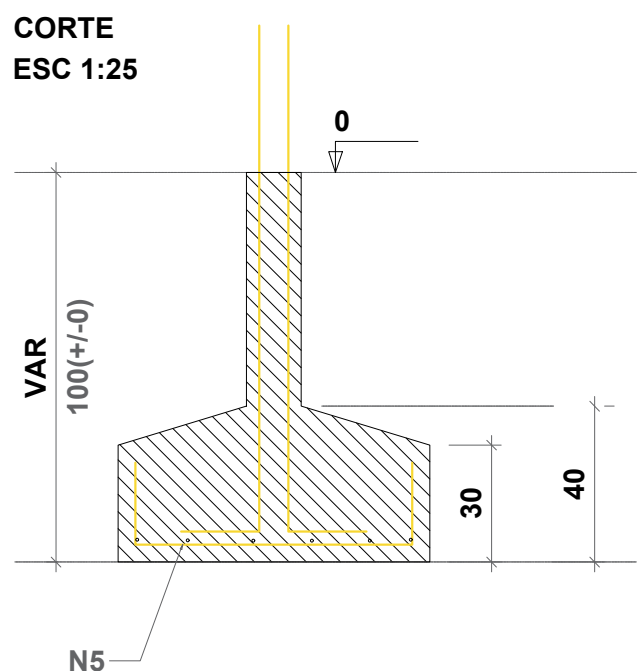
CORTE
ESC 1:25



S3-S4-S5-S6-S7-S8
PLANTA
ESC 1:25



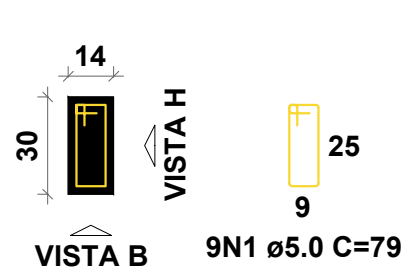
CORTE
ESC 1:25



P1-P2

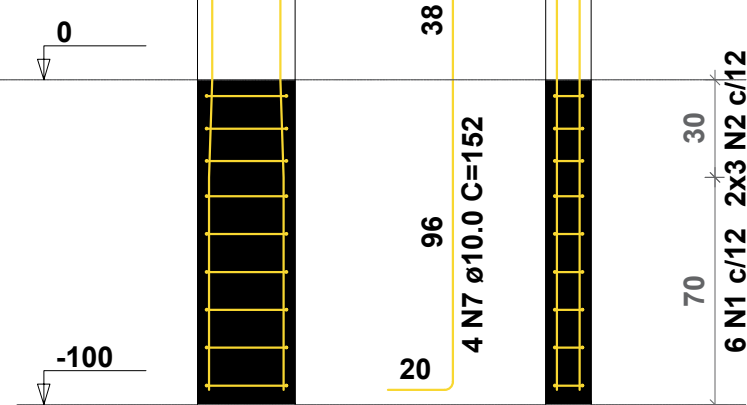
BALDRAME - L1

SEÇÃO
ESC 1:30



VISTA H
ESC 1:30

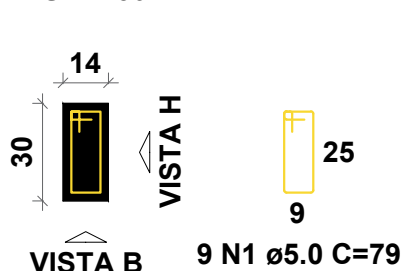
VISTA B
ESC 1:30



P3-P4-P5-P6-P7-P8

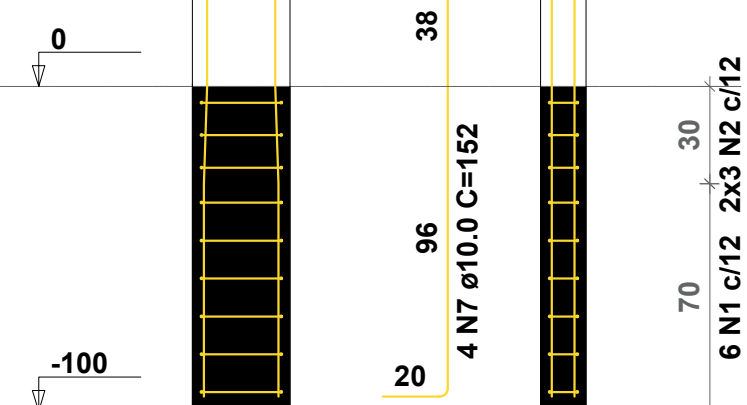
BALDRAME - L1

SEÇÃO
ESC 1:30



VISTA H
ESC 1:30

VISTA B
ESC 1:30



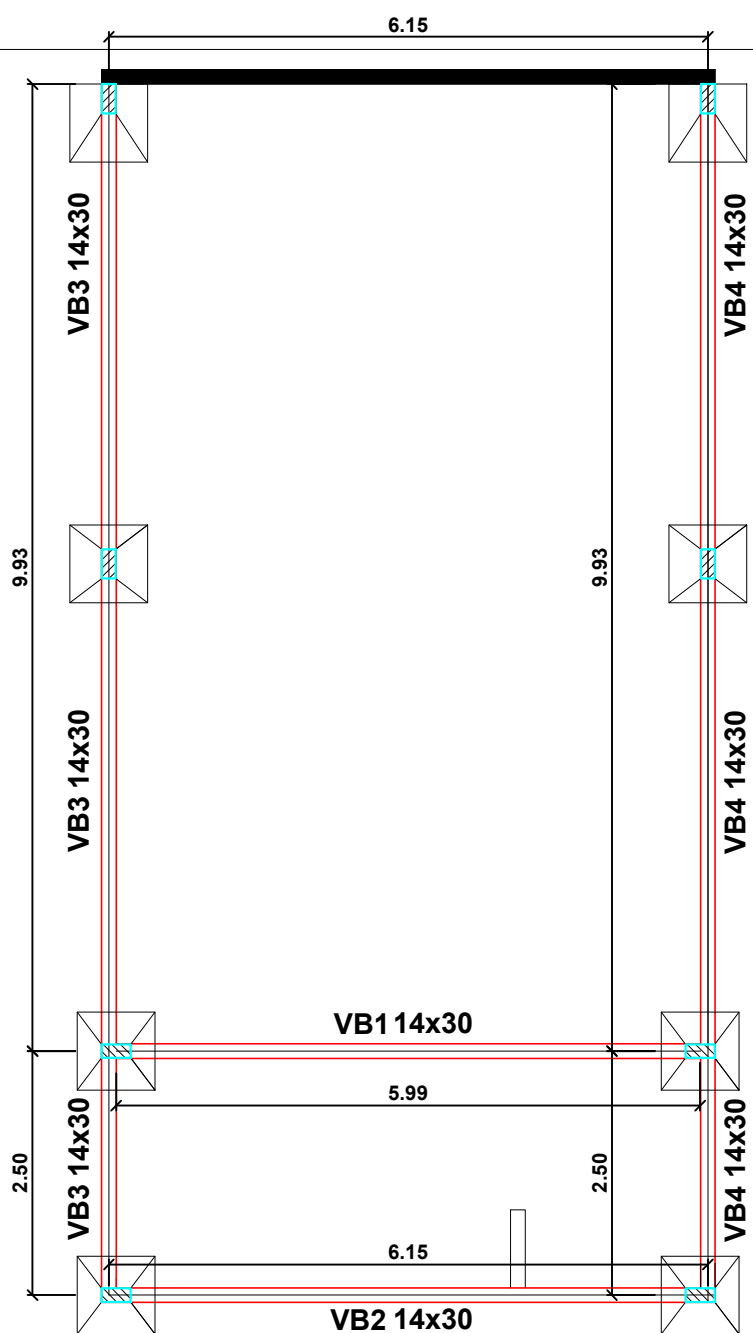
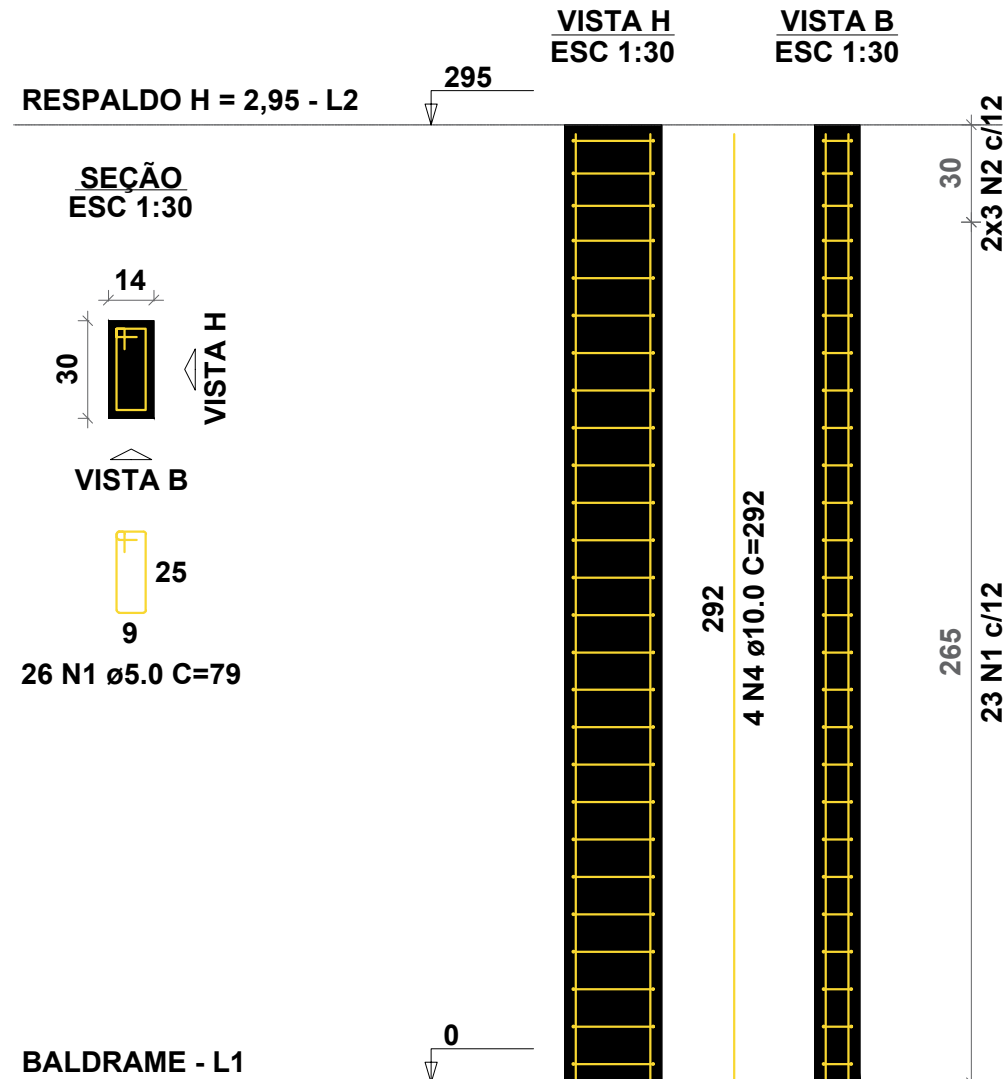
AÇO	DIAM (mm)	C.TOTAL (m)	QUANT + 10% (Barras)	PESO + 10% (kg)
CA50	8.0	104.64	10	45.46
CA60	10.0	48.64	5	33.01
CA60	5.0	56.88	5	9.63
PESO TOTAL (kg)				
CA50	78.47			
CA60	9.63			

Volume de concreto (C-25) = 2.37 m³
Área de forma = 7.04 m²

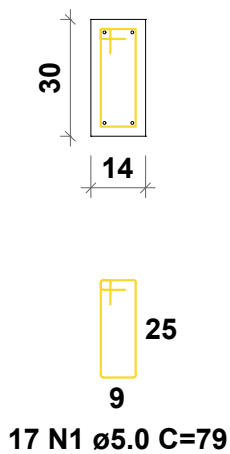
AÇO	DIAM (mm)	C.TOTAL (m)	QUANT + 10% (Barras)	PESO + 10% (kg)
CA50	8.0	93.45	9	40.70
CA60	5.0	164.32	14	27.83
PESO TOTAL (kg)				
CA50	40.70			
CA60	27.83			

Volume de concreto (C-25) = 1,00 m³
Área de forma = 14,40 m²

P1 a P8



Planta Baldrame
escala 1:50



Vigas			
Nome	Seção (cm)	Elevação (cm)	Nível (cm)
VB1	14x30	0	0
VB2	14x30	0	0
VB3	14x30	0	0
VB4	14x30	0	0
VB5	14x30	0	0
VB6	14x30	0	0
VB7	14x30	0	0
VB8	14x30	0	0



BALDRAME 37,30M

AÇO	DIAM (mm)	C.TOTAL (m)	QUANT + 10% (Barras)	PESO + 10% (kg)
CA50	8.0	162,75	14	70,89
CA60	5.0	196,71	18	33,32
PESO TOTAL (kg)				
CA50	70.89			
CA60	33.32			

Volume de concreto (C-25) = 1.56 m³
Área de forma = 22.38 m²

Legenda dos pilares	
	Pilar que morre
	Pilar que passa

Legenda das vigas e paredes	
	Viga

 		DEPARTAMENTO DE ENGENHARIA Av. Valdir Mazutti, nº 799W, Bom Jardim, Campos de Júlio/MT Telefone: 65 3387-2800	
OBRA REFORMA E ADEQUAÇÃO DO ESPAÇO RECREATIVO DE CRECHE IGNES BRESOLIN GIONGO			
PROponente	MUNICÍPIO DE CAMPOS DE JÚLIO	LOCAL	AV. Gov. Júlio Campos, Quadra 01, Lotes 01 - Vida Nova CAMPOS DE JÚLIO-MT
CONTEÚDO	SALA MULTIPLO-USO	DES.	CINTYA
PROPRIETÁRIO	MUNICÍPIO DE CAMPOS DE JÚLIO-MT CNPJ: 01.614.516/0001-99	ESCALA	INDICADAS
RESPONSÁVEL TÉCNICO	CINTYA VIEIRA SOUTO Arquiteta e Urbanista CAU-A 108810-3	DATA	JUNHO/2025
		ÁREA	Recreativo: 1.596,31m² Ampliação: 152,07m² Adequação: 96,70m²
		FOLHA	7/10